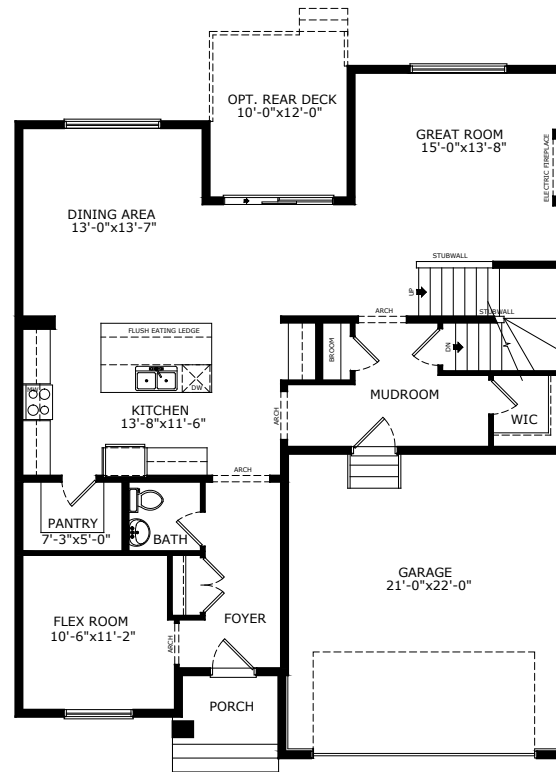
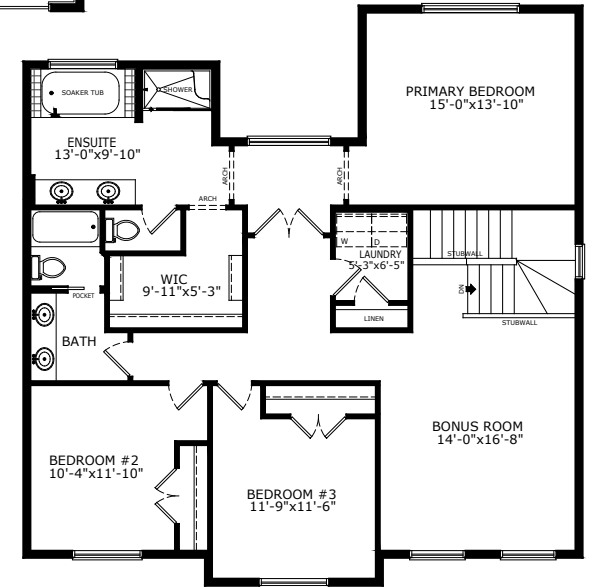


2703 SQ FT
3 BEDS
2.5 BATHS

CONNER



MAIN: 1320 SQ FT



UPPER: 1383 SQ FT

Sterling HOMES

A QUALICO Company

ELEVATIONS



MODERN CRAFTSMAN



MODERN FARMHOUSE



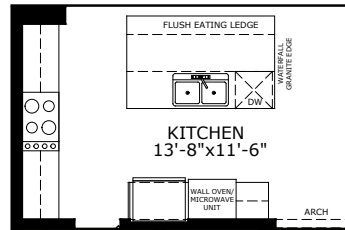
MODERN PRAIRIE



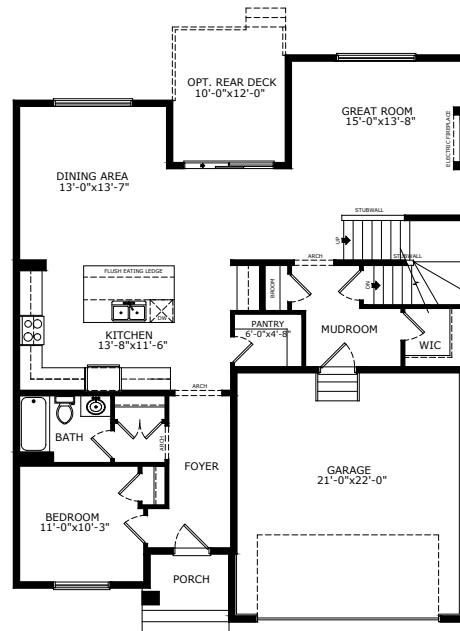
MODERN SCANDINAVIAN

MAIN FLOOR OPTIONS

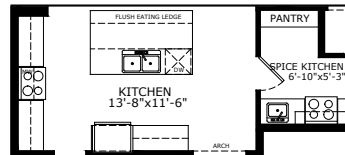
OPTIONAL EXECUTIVE KITCHEN



OPTIONAL MAIN FLOOR WITH
BEDROOM AND FULL BATH

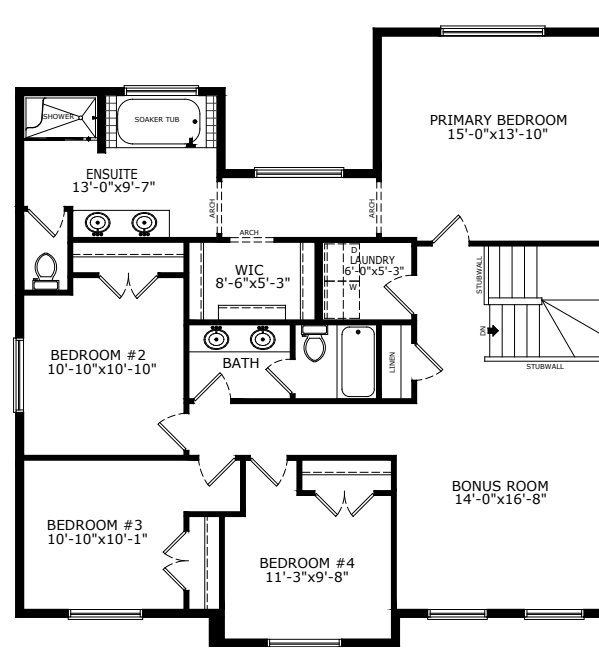


OPTIONAL SPICE KITCHEN



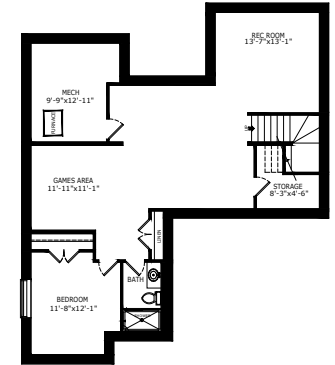
UPPER FLOOR OPTION

OPTIONAL UPPER FLOOR WITH 4 BEDROOMS

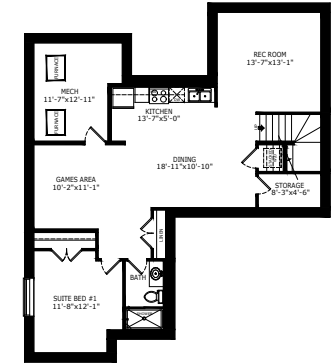


BASEMENT OPTIONS

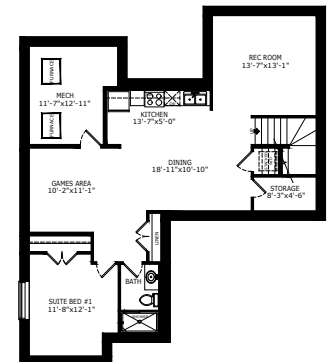
STANDARD 996 SQ FT



1 BEDROOM 'LEGAL SUITE' 581 SQ FT



2 BEDROOM 'LEGAL SUITE' 581 SQ FT



Scan here
for floorplan
options and
more

*Legal Suite availability varies by community and municipal regulations.

Build Your Life

STERLINGCALGARY.COM